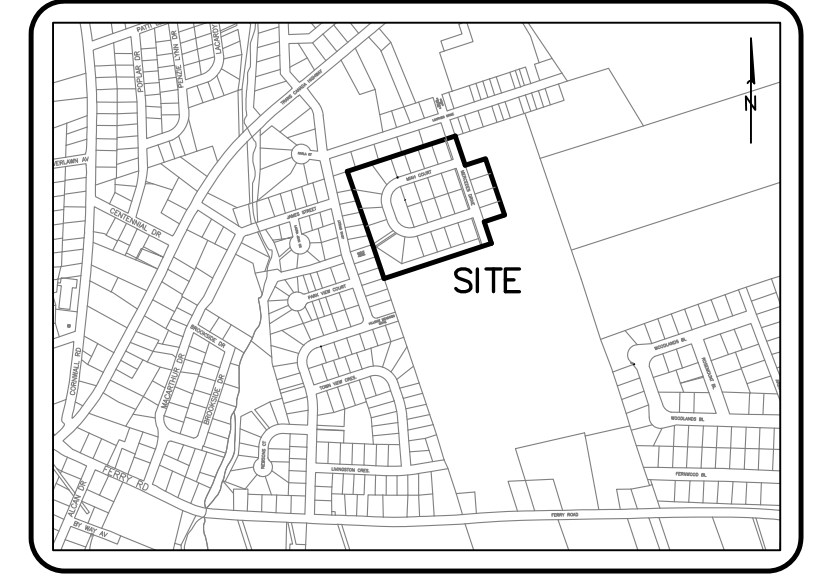
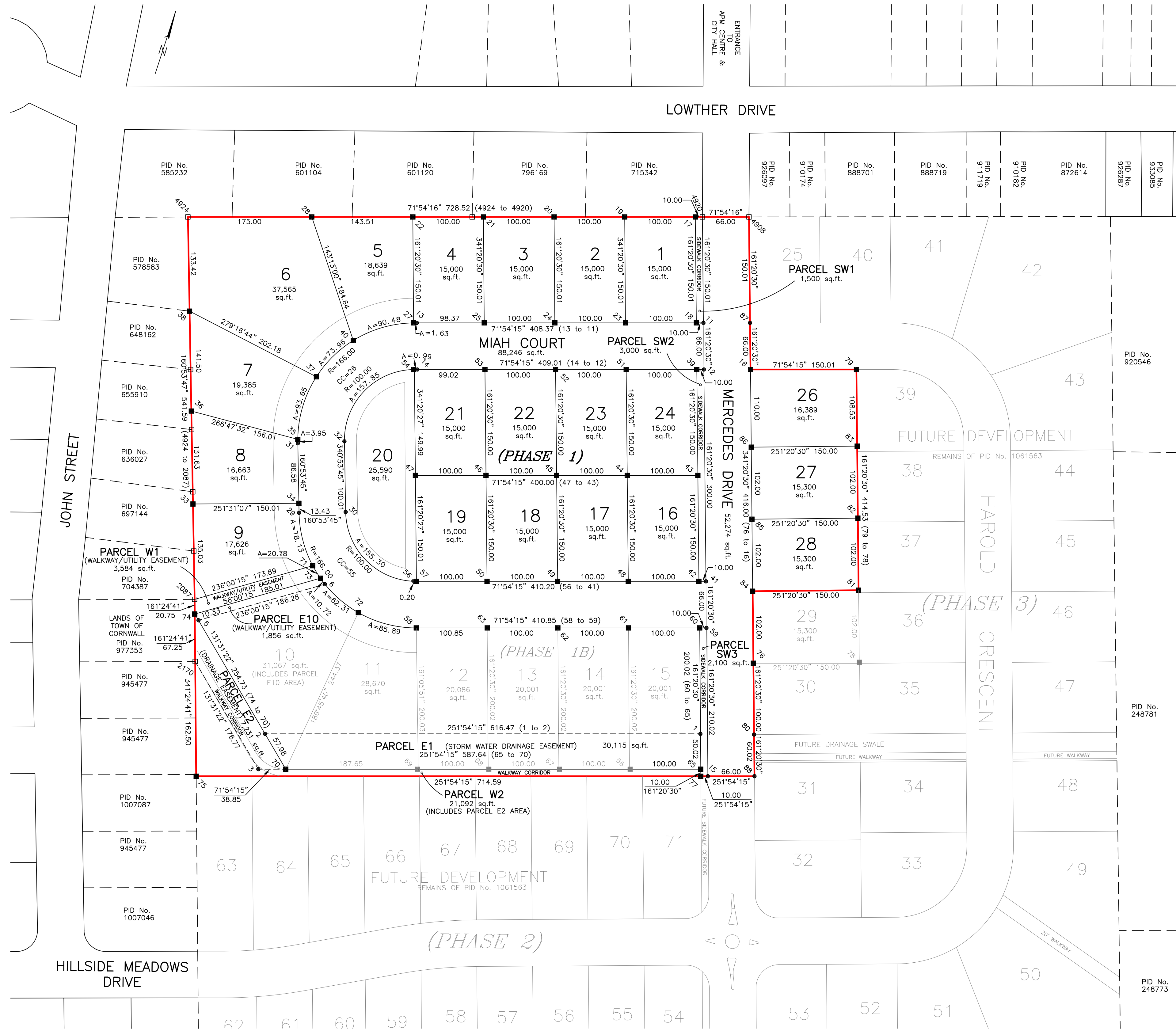


P.E.I. DOUBLE STEREOGRAPHIC PROJECTION COORDINATES  
EXPRESSED IN METRES, NAD83 (CSRS) DATUM

Point	Northing	Easting
1	686830.725	384111.522
2	686772.360	383932.913
3	686756.966	383934.889
4	686810.028	383960.372
5	686841.775	383937.446
6	686999.744	384057.666
11	686980.684	384064.103
12	686981.082	383939.351
13	686941.960	383945.600
14	686814.338	384120.273
15	686986.932	384083.225
16	687042.117	384040.141
17	686998.797	384054.769
18	687032.649	384011.169
19	687023.182	383982.197
20	687013.715	383953.224
21	687004.247	383924.252
22	686989.330	384025.797
23	686979.863	383996.824
24	686970.395	383967.852
25	686912.988	383955.067
26	686960.926	383938.880
27	686990.861	383982.674
28	686867.623	383917.234
29	686874.207	383936.243
30	686896.428	383907.257
31	686903.012	383926.266
32	686856.998	383872.529
33	686871.492	383915.894
34	686897.571	383930.876
35	686894.910	383859.398
36	686925.729	383906.101
37	686935.665	383845.282
38	686979.737	384061.205
39	686945.588	383916.372
40	686894.049	384093.356
41	686893.103	384090.459
42	686936.420	384075.832
43	686926.952	384046.860
44	686917.485	384017.887
45	686908.018	383989.915
46	686936.522	383959.942
47	686883.635	384061.487
48	686874.168	384032.514
49	686884.701	384003.542
50	686970.269	384032.233
51	686960.802	384003.260
52	686951.335	383974.288
53	686941.868	383945.315
54	686884.182	383965.044
55	686855.214	383974.510
56	686855.233	383974.569
57	686836.092	383980.759
58	686874.989	384099.793
59	686874.042	384096.895
60	686884.575	384067.923
61	686855.107	384038.951
62	686845.640	384009.978
63	686816.279	384116.400
64	686806.812	384087.428
65	686797.344	384058.455
66	686787.877	384029.483
67	686778.410	384000.511
68	686760.844	383946.145
69	686847.743	383929.941
70	686834.610	383954.913
71	686843.844	383934.767
72	686812.115	383889.015
73	686745.738	383910.340
74	686866.799	384123.791
75	686813.391	384117.375
76	686981.425	384167.108
77	687001.134	384126.686
78	686837.920	384133.543
79	686910.861	384157.162
80	686940.337	384147.215
81	686969.793	384137.269
82	686896.255	384113.845
83	686925.711	384103.898
84	686955.167	384093.952
85	687005.993	384076.789
86	686820.587	384139.396
87	686818.108	383885.999
88	686792.684	383894.550
89	687049.312	384062.161
90	687043.064	384043.041
91	686974.093	383831.972



**LEGEND**

- SUBJECT LANDS . . . . . □
- FOUND SURVEY MARKER . . . . . ■
- PLACED SURVEY MARKER . . . . . ●
- CALCULATED POINT . . . . . ○
- LENGTH OF ARC . . . . . A=
- RADIUS . . . . . R=
- CENTER OF CURVATURE . . . . . CC=

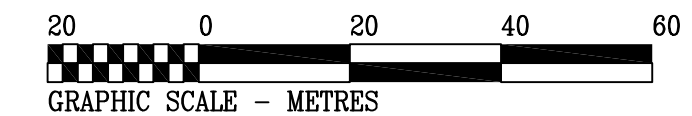
**NOTES**

1. THIS SURVEY WAS EXECUTED DURING THE PERIOD OF JULY, 2013 BY DEREK A. FRENCH, P.E.I.L.S.
2. PLAN HAS BEEN PREPARED IN METRIC, BUT ALL DISTANCES AND AREAS ARE SHOWN IN FEET UNLESS NOTED OTHERWISE.
3. ALL AZIMUTHS ARE GRID.
4. PROPERTY NUMBERS AND PROPERTY OWNER'S NAMES HAVE BEEN PROVIDED BY THE PEI DEPARTMENT OF FINANCE AND MUNICIPAL AFFAIRS TAXATION AND PROPERTY RECORDS, GEOMATICS INFORMATION CENTRE.
5. PHASE 1 CONSISTS OF LOTS 1 THROUGH 9, LOTS 16 THROUGH 24 AND LOTS 26 THROUGH 28 FOR A TOTAL OF 21 LOTS.
6. PHASE 1B IS SHOWN FOR INFORMATION PURPOSES ONLY TO DELINEATE PARCELS E1, E2 AND W2. LOTS 10 THROUGH 15 ARE NOT TO BE APPROVED AT THIS TIME.

Prepared by:  
**Derek A. French Professional Services Inc.**  
DEREK A. FRENCH, P.E.I.L.S.  
379 Trans Canada Highway, Cornwall, PEI, COA 1H0  
t: 902-394-2945  
f: 902-569-2944  
dfrench@pei.sympatico.ca

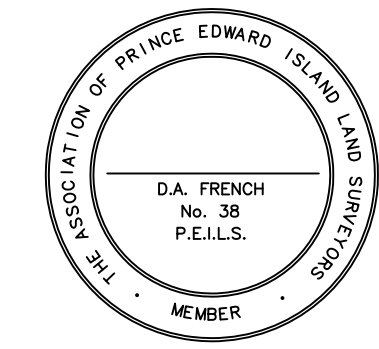
PLAN OF SURVEY SHOWING  
**HARVEST HILLS SUBDIVISION**  
(PHASE 1)  
BEING A SUBDIVISION OF LANDS OF  
101583 PEI INC.

SCALE 1: 1,000 metric



CORNWALL QUEENS COUNTY LOT 32 P.E.I.

DRAWN BY, D.A.F.  
DRAWING No. 1207-L1 Portion of P.I.D. No. 1061563



I, DEREK A. FRENCH, PRINCE EDWARD ISLAND LAND SURVEYOR, DO HEREBY CERTIFY THAT THIS SURVEY WAS EXECUTED UNDER MY DIRECTION AND SUPERVISION, AND THAT THIS PLAN IS A TRUE AND CORRECT REPRESENTATION OF SAID SURVEY.

DEREK A. FRENCH P.E.I. LAND SURVEYOR JULY 24, 2013. DATE