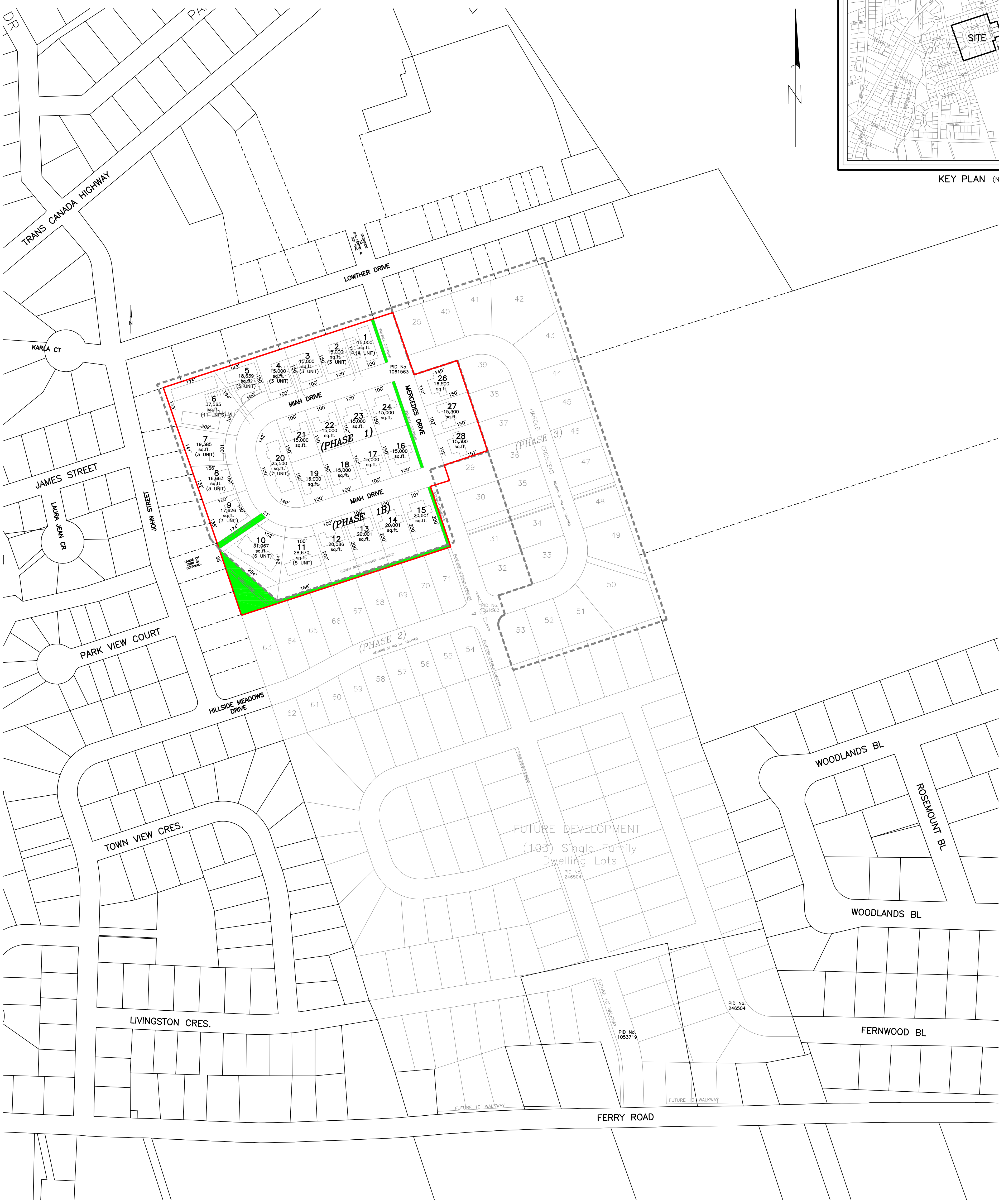


KEY PLAN (N.T.S.)



LEGEND

- LANDS DEALT WITH BY THIS PLAN
- PHASE OUTLINE
- WALKWAYS AND OPEN AREAS

(PHASE 1)

1. (11) SEMI-DETACHED LOTS
2. (6) 3 UNIT LOTS
3. (1) 4 UNIT LOT
4. (1) 5 UNIT LOT
5. (1) 7 UNIT LOT
6. (1) 11 UNIT LOT
- TOTAL UNITS = 60

OPEN AREAS

1. WALKWAYS AND NATURAL DRAINAGE SWALES PHASE 1 AND 1B = 0.72 Ac.±
2. TOTAL DEVELOPABLE AREA PHASES 1 AND 1B = 15.2 Ac.±
3. DESIGNATED OPEN SPACE AREA FOR PHASES 1 AND 1B IS 4.7%.

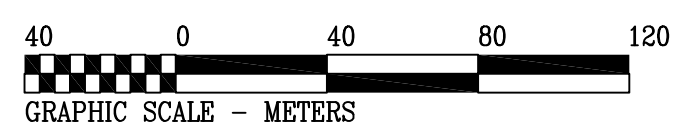
NOTES

1. ALL DIMENSIONS ARE GIVEN IN FEET, UNLESS NOTED.
2. PLAN PREPARED IN METRIC.

(PHASE 1B)

1. (4) SEMI-DETACHED LOTS
2. (1) 5 UNIT LOT
3. (1) 6 UNIT LOT
- TOTAL UNITS = 19

SCALE 1 : 2,000 metric



Prepared by:
Derek A. French Professional Services Inc.
 DEREK A. FRENCH, P.E.I.L.S.
 379 Trans Canada Highway, Cornwall, PEI, COA 1H0
t: 902-394-2945
f: 902-569-2944
dfrench@pei.sympatico.ca

PRELIMINARY PLAN SHOWING
HARVEST HILLS SUBDIVISION
 BEING LANDS OF
101583 PEI INC.

CORNWALL QUEENS COUNTY LOT 32 P.E.I.

DRAWN BY: D.A.F.
 DRAWING No. 1408-1 P.I.D. No. 1061563

PREPARED BY:

DATE: JULY 9, 2014
 DEREK A. FRENCH P.E.I. LAND SURVEYOR